



***Florida East Coast Railway***

**FECR CONNECT**

**Customer User Manual**

**Releasing Rail Cars  
With Spotting Instructions**

REV 10/2017

## Welcome to FECR Connect!

**Florida East Coast Railway. Connecting Florida to the world.**

Below are quick links to FECR Connect applications. Click a thumbnail to open that application or hover over a thumbnail for a description. If you do not see any quick links please contact support.

For any questions or issues, please contact FECR Connect support at 1-800-824-2330, option 1



Once logged into FECR Connect, please select the **Release Railcars** application to release empty and request in loaded cars.

## Releasing Railcars Empty

To release railcars from your FECR Connect dashboard, you can use one of two ways.

1. Release a single car.
2. Release a group of cars at once.

The screenshot shows the "FECR Connect - Release Railcars" dashboard. At the top, there are navigation buttons: Select, Release, Waybill, Filter, Refresh, and Support. Below is a table with columns: Customer, Waybill, Unit Nbr., Type, and Loaded?. The table contains five rows of railcar data.

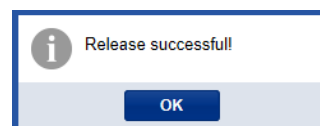
	Customer	Waybill	Unit Nbr.	Type	Loaded?
<input type="checkbox"/>	FORMOSA PL...	<a href="#">569941</a>	TCIX 57094		Loaded
<input type="checkbox"/>	FORMOSA PL...	<a href="#">611484</a>	FPAX 950049		Loaded
<input type="checkbox"/>	BUNGE NORT...	<a href="#">244371</a>	BRCX 1387		Loaded
<input type="checkbox"/>	T&S WAREH...	<a href="#">327546</a>	TBOX 660052		Empty
<input type="checkbox"/>	BUNGE NORT...	<a href="#">243847</a>	DBUX 250588		Loaded

1. To release a single railcar empty, click on the (up arrow icon) on the left side of the screen

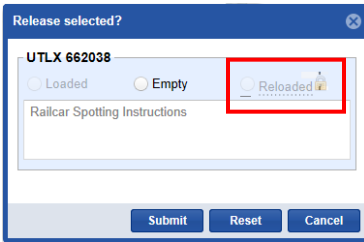
The following window below will generate. When releasing railcars empty, the spotting instructions will be automatically removed. **Only apply instructions of car needs mechanical assistance. Describe the defect or assistance needed.**

To continue releasing the railcar, check the **“Empty”** tab and click submit. Once the railcar has been successfully released, you will receive a “Release Successful” message. You will also receive an email confirmation of the release for your records.

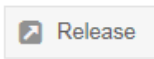
A dialog box titled "Release selected?" for railcar "UTLX 662038". It has three radio buttons: "Loaded", "Empty" (selected), and "Reloaded". Below is a text area for "Railcar Spotting Instructions". At the bottom are "Submit", "Reset", and "Cancel" buttons.



**NOTE:** When reloading a railcar with an outbound commodity or dunnage material, please choose the **Reloaded** option. The reloaded option will unlock once an outbound waybill has been created using the Order Entry application of Connect.



- To release multiple cars, place a ✓ on the left side of the screen for each car you would like to release. Once all desired cars are check marked, click on the release button at the top of the screen.



Please ensure all spotting instructions are removed by clicking on **“Remove All Instructions.”** To continue releasing the railcars, check the **“Empty”** tab in green to mass release. Next, click on submit to release all cars selected.

